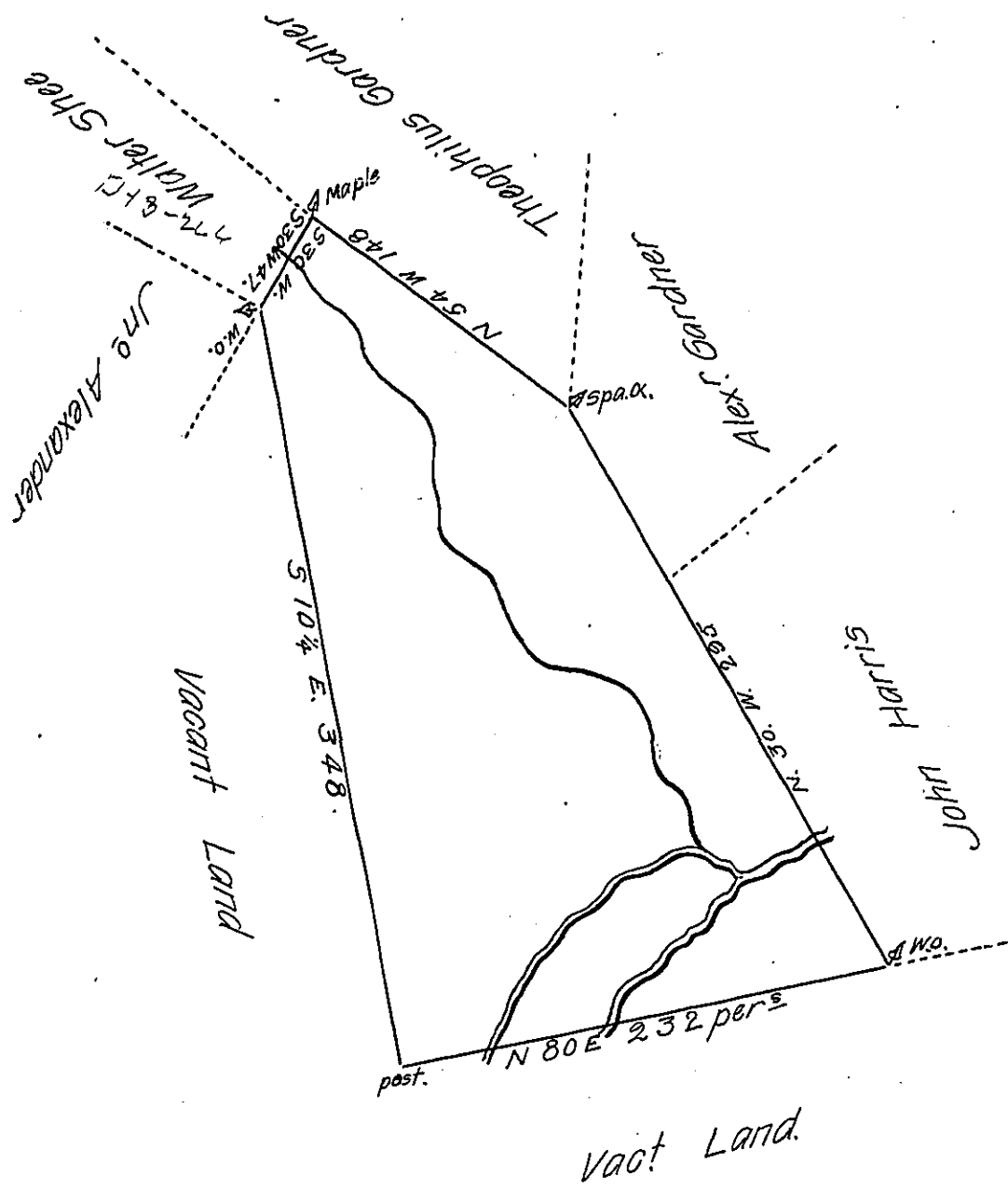


FORM No. 1.



A Draught of a Tract of Land called Whitm (obl.) Meadow, Situate on the South Side of the West Branch of Susquehanna-nearly Opposite the Long Island in the County of Northumberland Surveyed the 21st Day of July 1773 to John Whitmer jun^r (obl.) pursuant of his Warr^t dated the 17th Day of July 1773 Containing Three hundred & Thirty Acres & allowance of Six Acres P^r Cent.

To John Lukens Esq^r
Surveyor General

Chas Lukens D.S.

IN TESTIMONY that the above is a copy of the original remaining on file in the Department of Internal Affairs of Pennsylvania, made conformably to an Act of Assembly approved the 16th day of February 1833, I have hereunto set my hand and caused the Seal of said Department to be affixed at Harrisburg, this eighteenth day of May 1907.

Henry Howell
Secretary of Internal Affairs.